



Operating manual

Hand Pump

K 10 C

Translation of the
original operating manual
GB

Important!

The operating manual is always to be read before commissioning the equipment. No warranty claim will be granted for faults and damage to the equipment arising from insufficient knowledge of the operating manual.

Copyright

© TECALEMIT GmbH & Co. KG. All rights reserved.

Text, graphics and layout copyright protected. Reproduction and copying, including in part, only permitted with written permission. Technical changes reserved.

Service Hotline +49 1805 900 301

(0,14 €/Min: on the German landline network, Mobile telephone max. 0,42 €/Min.)

service@tecalemmit.de

Document-No.: 44 0423 002-K
Translation of: 44 0423 001-L
As of: December 5, 2022

Table of content

1	Safety instructions	3
2	Product description / Intended use	5
2.1	Product versions.....	5
2.2	Permitted Liquids	5
2.3	Vicinity	5
2.4	Technical data.....	6
2.5	Accessories.....	6
3	Assembly	7
3.1	Assembly instructions.....	7
3.2	Securing against unauthorised use	7
4	Operation	8
4.1	Potential equalisation cable.....	8
4.2	Dry operation	8
4.3	Commissioning	8
4.4	Normal operation.....	8
5	Maintenance	8
6	Disposal	9
7	Spare parts	10

1 Safety instructions

This device was manufactured taking into account the relevant laws and directives for ensuring security as well as the protection of the environment and health. Despite this, its use may result in hazards for persons and material assets. Hence, it is essential that the instructions in this manual are complied with.

Warning notices and symbols

In this operating manual, the following symbols are used to point out especially important information:



Specific details on the economic use of the device.



Specific details and/or instructions for damage prevention.



Details and/or instructions for preventing injury to persons or extensive material damage

Intended use



Use the device only when it is in perfect working condition and only for its intended purpose while observing all safety precautions and risks. In particular, all malfunctions that could pose a safety hazard are to be corrected immediately.

The device and its components are intended for use exclusively with the liquids listed and only for the purpose described. Any other use or additional manner of usage is not intended.

Organizational measures



This operating manual is to be kept within easy reach at the place of operation. The nameplate and the warning labels on the device must be observed and kept completely legible at all times.

Qualified personnel



The personnel for installation, commissioning, operation, and maintenance of the device must possess the relevant and adequate qualifications for these tasks. The operator must ensure that the contents of this manual are fully understood and implemented by the personnel.

Maintenance and repairs



Do not make any changes, extensions and/or modifications to the device without the manufacturer's permission. Replacement parts must conform to the technical specifications defined by the manufacturer. For original parts, this conformity is always guaranteed.

Hazardous substances



In exceptional cases, the components of this device may contain hazardous substances. In accordance with the requirements of the European REACH regulation, we provide current information on this on our homepage, in the download section. Observe all safety regulations for the respective product when handling oils, greases, fuels and other chemical substances!

Explosion protection



The device is designed for operation in areas with potentially explosive atmospheres. According to the guideline to the ATEX Directive 2014/34/EU, hand-operated devices without their own ignition source do not fall under this guideline. Hence, no declaration of conformity can be issued for the hand pump under ATEX.

The operator is to take the required explosion protection measures when the device is used with flammable liquids or in areas with potentially explosive atmospheres. In particular, the ATEX Directive 1999/92/EC and the respective applicable regulations at the place of operation are to be observed.

Water protection



The device has been constructed for use with water contaminants. It is to be operated such that bodies of water cannot be polluted by it. All applicable regulations at the place of operation are to be complied with!

2 Product description / Intended use

The K 10 C is a single-action hand pump for pumping the media listed below from barrels, drums and overground storage tanks. The M64 x 4 and G2" threads integrated in the housing enable simple assembly. The K 10 C is available with two different suction pipes.

2.1 Product versions

There are different versions available: designs with various suction pipes, installation positions, hose fittings etc. For detailed information, please refer to the catalog or the website (www.tecalemit.de).

2.2 Permitted Liquids

The K 10 C may be operated with the following flammable and non-flammable liquids: Diesel, heating oil EL/L, fuels (petrol, E85), petroleum, antifreeze (undiluted), low viscosity mineral oils and RME.



The aforementioned permissible flammable liquids are to be classified in ATEX explosion group IIA and temperature class T3!



Operation with flammable liquids is only permitted in conjunction with the appropriate components!



In some sets, the hand pumps are supplied with a non-conducting dispensation hose. These pump sets are not suitable for operation with flammable liquids!

During operation without explosion protection measures (e.g. without potential equalization cable, non-conductive dispensation hose), no liquids which are warmed to a temperature above their flash point are to be conveyed!

2.3 Vicinity

The K 10 C hand pump is suitable for use in areas with potentially explosive atmospheres. In this case, the required explosion protection measures are to be taken by the operator.



Ensure that all components in the environment in which the pump is used are suitable.

In particular, a potential equalization cable and a conductive dispensation hose are to be used.

2.4 Technical data

Pump dimensions	Height	approx. 257 mm
	Diameter	approx. 92 mm
Immersion depth	Stiff suction pipe	840 mm
	Telescopic suction pipe	470 - -925 mm
Barrel connection	Thread	M64x4 / G2"
Pump type		Single-action piston pump
Pumping capacity		approx. 0.25 l/stroke
Permissible ambient temperature		-20° +40° C
Permissible media temperature		-20° +40° C

2.5 Accessories

209 060 030	Potential equalisation cable 2 m
245 040 000	FF 20 filter for K 10 C with suction pipe Ø20
245 050 000	FFT 26 filter for K 10 C with Telescopic suction pipe Ø26
308 103 100	Hose fittings 1.5 m DN 19 x 4 HORN 40 X, with outlet elbow AK 20 and anti-kink spring
316 103 100	Hose fittings 1.5 m DN 19 x 4 HORN 365 X, electrically conductive, suitable for flammable liquids with outlet elbow AK 20 and anti-kink spring
316 303 100	Hose fittings 1.5 m DN 19 x 4 HORN 365 X, electrically conductive, suitable for flammable liquids with outlet valve AV 20 and anti-kink spring
320 303 100	Hose fittings 1.5 m DN 19 x 4, LZ19 with insert, electrically conductive, suitable for flammable liquids with outlet valve AV 20 and anti-kink spring RME-resistant

3 Assembly

Remove the packing material completely and obey the instruction for assembly.

3.1 Assembly instructions

Suction Connection

Screw suction tube (4) in suction face of the pump pivot. (6)

Optional: Place suction filter (1) on suction pipe (2) and fix with hose clamp (3). (Suction filter (1) and hose clamp (3) are optional accessories)

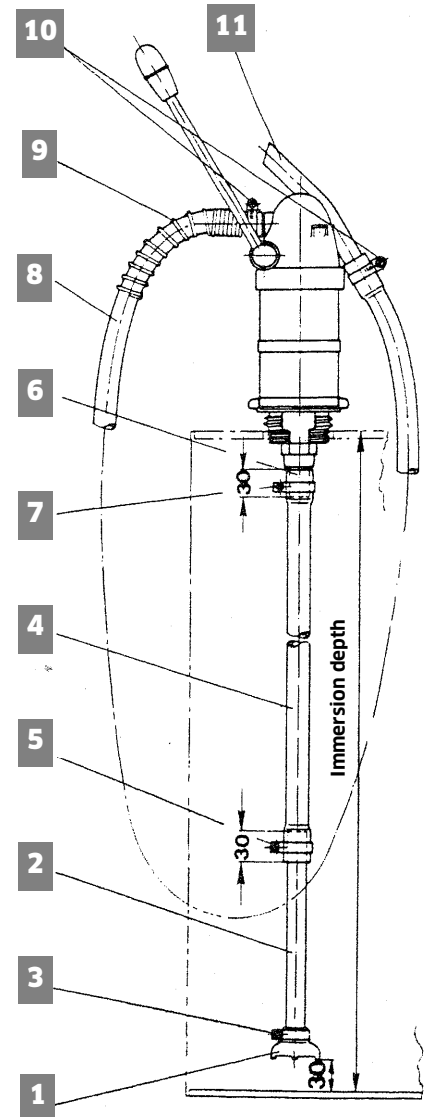
Pressure connection

Place Hose clamp (10) and break protection spring on black pressure hose (8) and push it onto the female connector of the pump. Fix spring with bent wire (9) and hose clamp (10). Secure hose by tightening the bolt on the hose clamp.

Screw the pump onto the upright barrel.

Optional: screw potential equalisation cable tightly to the pump.

Operation without filter is not permitted. An exception may only be made when it has been ensured that only clean media will be delivered.



3.2 Securing against unauthorised use

The pump lever can be locked to the pump head with a conventional padlock (the lock is not included in the scope of supply).

4 Operation

4.1 Potential equalisation cable



During use in potentially explosive areas, every pump and container should be earthed prior to commissioning or provided with a potential equalisation between themselves and earthed altogether.

The potential equalisation of the pump can take place with the potential equalisation cable, item no. 209 060 030, which is available as an accessory. Attention should be paid to a highly conductive transition at the connection points of the potential equalisation cable.

4.2 Dry operation

Avoid running the pump dry for extended periods (longer than 20 s).



Running the pump dry for extended periods may result in the pump reaching inadmissibly high temperatures – explosion hazard!



Continuous dry running can cause the damage of the pump.

4.3 Commissioning

Place the outlet pipe into a tank or other suitable container.

Move the lever backwards and forwards until liquid emerges from the outlet pipe.

4.4 Normal operation

Move the lever backwards and forwards until the desired quantity has been pumped out.



Make sure that no inadmissible heated up media are pumped – danger of explosion.

After dispensing, empty the hose and hang it on the hook provided.



No liquid may remain in the hose during breaks in operation!

5 Maintenance

As soon as the pumped quantity falls off noticeably, check the filter in the suction pipe and clean it if necessary.

Regularly check for leaks at the discharge hose and at the connecting elements. Faulty seals or hoses must be exchanged immediately.

The potential equalization cable and the conductive dispensation hose are to be checked regularly for damage and sufficient electrical conductivity.



Operation with flammable liquids and in areas with potentially explosive atmospheres is only permitted with an undamaged potential equalization cable and dispensation hose!

6 Disposal

The device is to be emptied completely and the liquids properly disposed of in case it is taken out of service.

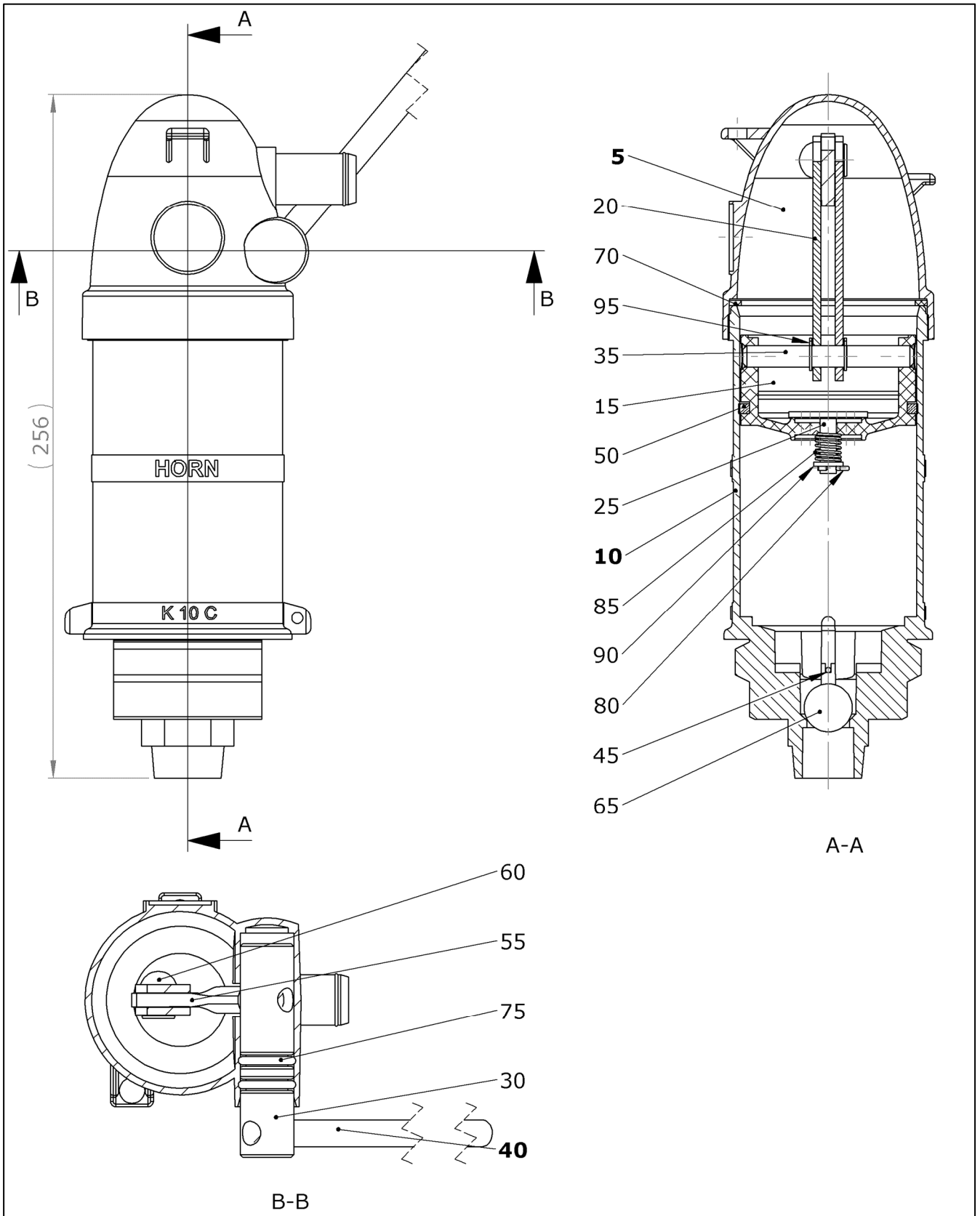
The equipment is to be disposed of properly when taken permanently out of service:



- Return old metal for recycling.
- Return plastic parts for recycling.

 **The water legal regulations are to be followed.**

7 Spare parts



Item no. Spare Part Kit	Designation of components	Content of Spare Parts Kits			
		Picture - Position - Designation - Quantity			
248000080	Spare seals set 8 for K10C General maintenance-set without housing parts	1	10	Piston complete 423/3 Contains positions 15, 20, 25, 35, 50, 55, 60, 80, 85, 90 and 95 completely preassembled.	1
		1	20	O-ring D.15,5x3 Perbunan	2
		1	30	Gasket D.65x74x2 uni-blue	1
				Repair tool 1	1
804238004	Hand lever K10C complete with shaft, rocker arm and seals Manual lever shaft with hand lever, rocker arm completely and seals. Contains items 20, 30, 35, 40, 50, 55, 60, 70, 75 and 95.	1	20	Piston rod 504230006-B K10C	2
		1	30	Shaft WN83AA D.20x80	1
		1	35	Piston Pin WN379.B	1
		1	40	Hand lever WN 80.7	1
		1	50	Packing Cord 4x4x195 - Ramilon	1
		1	55	Rocker arm 504230001-C D.10x64	1
		1	60	Button-head rivet D.8x15 DIN 6	1
		1	70	Gasket D.65x74x2 uni-blue	1
		1	75	O-ring D.15,5x3 Perbunan	2
		1	95	Circlip D.8x0,8 / DIN 471	2
				Ball grip WN169 Lupolen	1
				Repair tool 1	1
804238005	Top part K 10 C complete with seals Contains items 5, 70 und 75	1	5	Upper part K10 C 04230005-B	1
		1	70	Gasket D.65x74x2 uni-blue	1
		1	75	O-ring D.15,5x3 Perbunan	2
				Repair tool 1	1
804238003	Cylinder completely 423/2 for K 10 C Cylinder complete with check valve ball, bridge and housing seal. Contains items 10, 45, 65 and 70.	1	10	Cylinder K10C 604230004-B	1
		1	65	Ball D.18 steel size VI	1
		1	45	Pin WN407C	1
		1	70	Gasket D.65x74x2 uni-blue	1
				Repair tool 1	1
691990054	Suction pipe for K10C 20x1,5x790, depth 840mm Standard suction tube depth 840 mm matching products 103083000				
691990053	suction tube 20 x 1,5 x 510 for K 10 C Special suction pipe depth 560 mm for horizontal drums				
691990067	Suction tube 20 x 1,5 x 940 for K 10 C Special suction pipe depth 990 mm				
691990094	Suction tube 20 x 1,5 x 1445 for K 10 C Special suction pipe depth 1500 mm				
906820001	Telescope suction tube TR2 / 1 for K 10 C Telescope suction tube TR2 / 1 with K 10 C, depth 535-990 mm at 15 mm ground clearance!				



TECALEMIT GmbH & Co. KG

Munketoft 42
24937 Flensburg
Germany

T +49 461-8696-0
F +49 461-8696-66

www.tecalemit.de
info@tecalemit.de